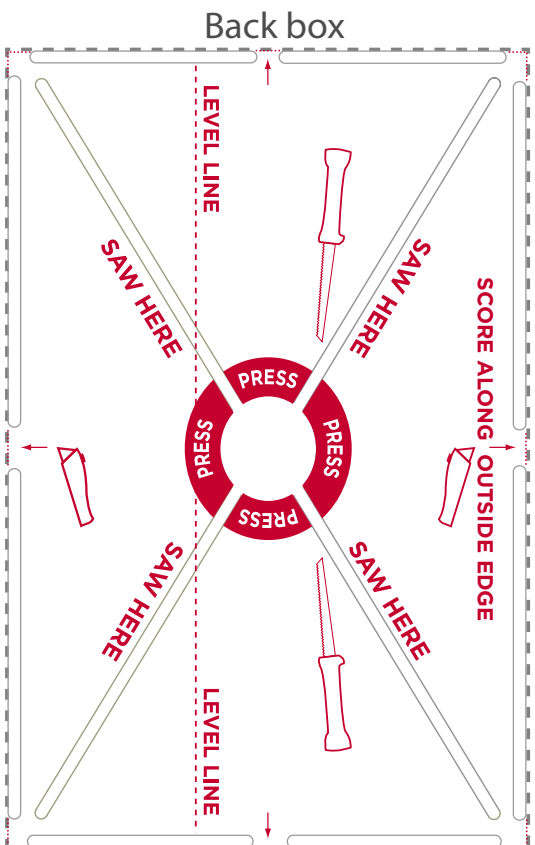


T4 In-Wall Touchscreen Planning Template

Important: Print with no scaling

INSTRUCTIONS: (for full instructions, see ctrl4.co/t4-iw-ig) **1.** Using a level, draw a horizontal pencil line 150-160 cm (59 to 63 in.) above the floor, then tape this template to the wall so its level line matches the level line you just drew. **2.** Using a utility knife, score drywall along the OUTSIDE EDGE of the eight perimeter slots, cutting a rectangle. **3.** Using a drywall saw, puncture a hole in the drywall in the template's center, then saw outward from the center through the diagonal slots to each corner. **4.** Remove the template, press on each of the triangular quadrants of drywall until each snaps along the scored perimeter lines, then use a utility knife to remove the pieces and clean up the opening.



8" touchscreen

10" touchscreen

Level, Score, Saw, Press