

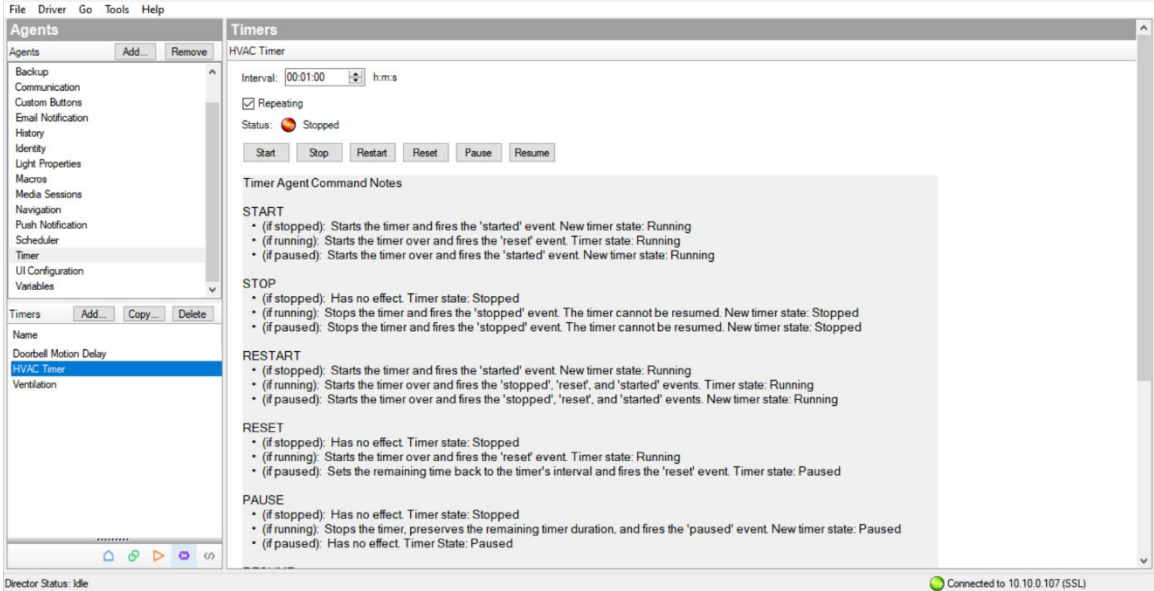


Programming Tips and Tricks

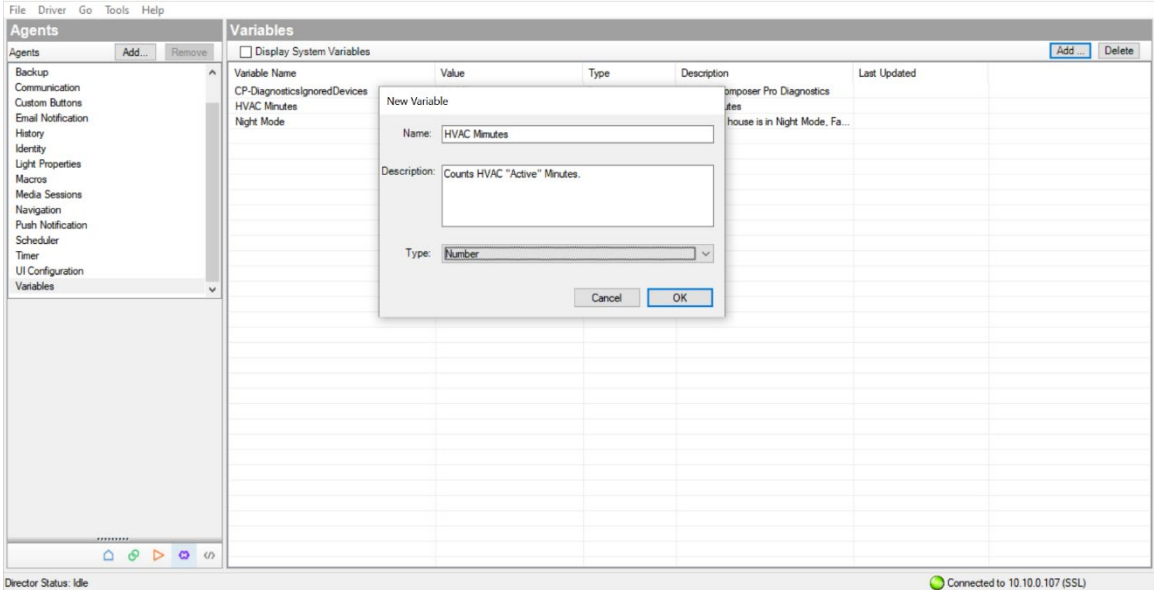
HVAC USAGE NOTIFICATION PROGRAMMING

In the example below, we're tracking how many minutes our HVAC system runs each day (for both heating and cooling), and getting a notification each night, letting us know how long it's run for. This same programming concept could easily be adapted to show how long a TV has been on, or a door opened, or you could track pool pump run times, etc. - anything that doesn't already have a native timer built into the driver... you get the idea...

- 1. Create an appropriately named one-minute repeating timer, **HVAC Timer**.



- 2. Create a corresponding number variable, **HVAC Minutes**.





3. In the Programming tab, under the Thermostat Variables, program:
[When HVAC State Changed]
-> If State is **Stage 1 Cool** (and/or **Stage 1 Heat** if you want to see Heating minutes)
-> Start **HVAC Timer**
-> If State is **Off** -> Stop **HVAC Timer**

Director Status: Idle

Connected to 10.10.0.107 (SSL)

4. In the Programming tab, under the HVAC Timer, program:
[When HVAC Timer expires]
-> Variables > **HVAC Minutes = Variables > HVAC Minutes + 1**

Director Status: Idle

Connected to 10.10.0.107 (SSL)



5. Set up a Push Notification being sure to include the following variable {Variables::HVAC Minutes}. You can add other variables too for additional information, as in the example below. (The variables can be found by clicking on **Add Variable** in the bottom-left corner of the Push Notification agent screen, then navigating to variables and/or a specific device in the drop-down).

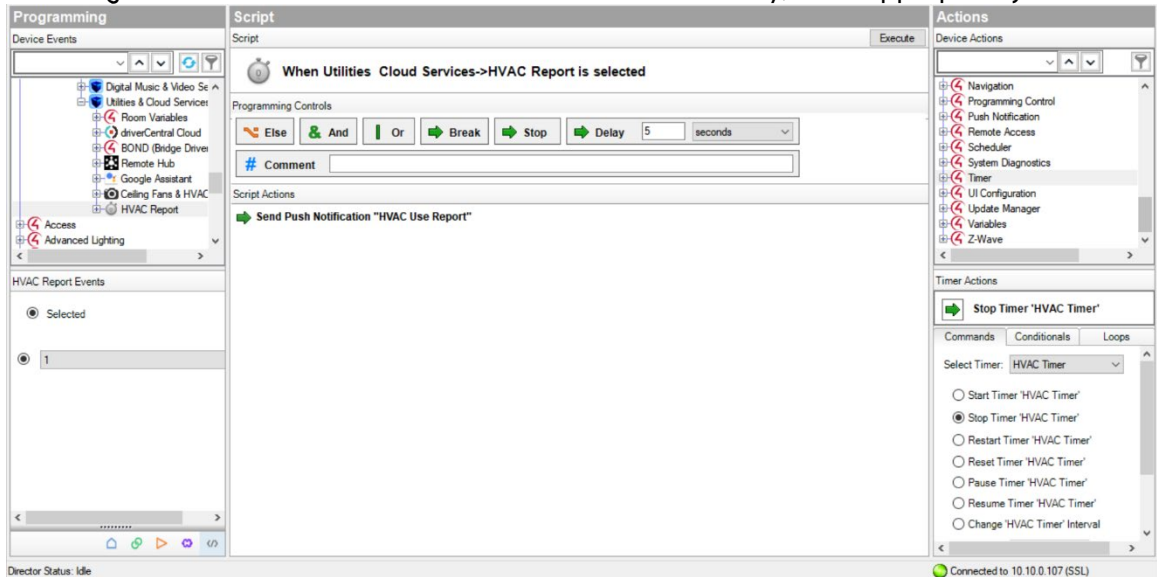
Director Status: Idle Connected to 10.10.0.107 (SSL)

6. Set up a scheduled event once a day to send the notification and reset the variable back to zero.

Director Status: Idle Connected to 10.10.0.107 (SSL)



7. Optionally, you could program a **Custom Button** or **Experience button** to send the notification as well. (Just be sure to set the variable back to zero once a day, or as appropriate).



Dennis Warzun
Operations Manager | Integrated Smart Technologies