



WK-1-O

802.11ac 2x2 Wireless AP
with OvrC, Outdoor



OvrC
Enabled

QUICK START GUIDE

WK-1-O features

- 802.11ac 2x2 Wireless AP with OvrC, Outdoor
- 2x2 external outdoor antennas
- Powered by PoE+
- For more detailed instructions, refer to the *WK-1 User Guide* (pkdgc.co/wrx-ug).
- OvrC built in

System requirements

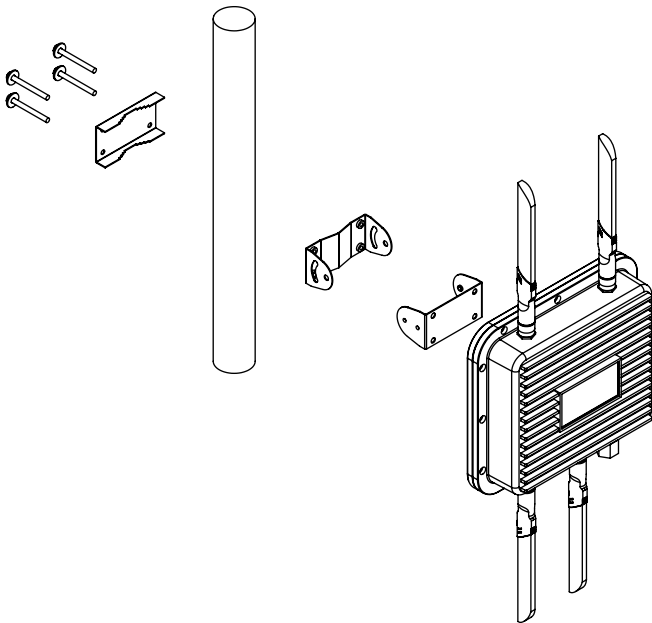
- Windows or Mac PC with an Ethernet interface

Default settings and credentials

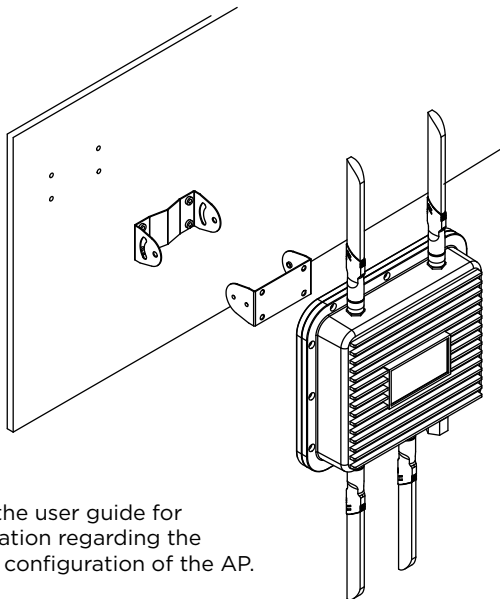
- Operation mode: Access Point
- IP address: If no DHCP server is detected, the default IP address will be automatically set to **192.168.1.250**.
- Username/Password (default): **pakedge/pakedgea**
- SSIDs (default): **Pakedge2.4-1** and **Pakedge5-1**, security/password: WPA2-PSK/**pakedgewireless**
- Guest SSIDs (default): **PakedgeGuest2.4** and **PakedgeGuest5**, security/password: **WPA2/pakedgeguest**
- Transmit power: Default is 13 dBm for 2.4 GHz and 18 dBm for 5 GHz.

Mounting options

Pole mount



Wall mount



Note: Refer to the user guide for detailed information regarding the installation and configuration of the AP.

Powering up the access point

The access point can be powered by PoE+.

To power up the access point:

- 1 Connect power using a POE+ injector or a POE+ switch.

The access point should now be up and running with its default settings. It does not need to be configured to be functional. To make changes to the SSID and security settings, you need to access the AP using a web browser.

Logging in to the access point

To log in to the access point:

- 1 Connect a computer to the access point with an Ethernet cable.
- 2 Enter **192.168.1.250** into your web browser. You should see a login page.
- 3 In the *username* box, type **pakedge**. In the *password* box, type **pakedgea**, then click **Log in**. The *Quick Setup* page opens.

Quick Setup Personalizing your access point for the best performance and security

Username/Password

Username:

Password:

Confirm Password:

Country Code Select your country

Country:

Wireless Configure wireless settings for your access point

Wireless Mode:

Channel:

2.4 GHz SSID:

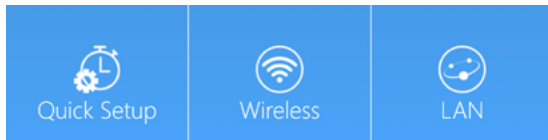
5 GHz SSID:

[Help](#) [Back](#) [Home](#) [Log out](#)

- 4 Enter and verify a new password (required) before continuing.

Notes:

- The *Quick Setup* page includes the most important configurations in one place, so you can save time configuring the network.
- This page will display the first time you connect to the access point. After connecting, you can also access this page and the *Wireless* settings page from the dashboard.



Caution:

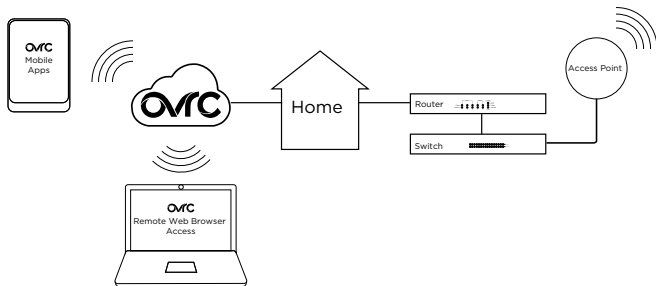
- For U.S. access point models, *Country Code* is locked to **United States**. For international models, *Country Code* is a drop-down list (defaulting to **GB - United Kingdom**), which *must be changed* to the specific country of operation.



Registering your device with OvrC

OvrC gives you remote device management, real-time notifications, and intuitive customer management, right from your computer or mobile device. Setup is plug-and-play, with no port forwarding or DDNS address required.

To add this device to your OvrC account:



- 1 Connect the AP to the internet
- 2 Log into OvrC (www.ovrc.com)
- 3 Add the Device (MAC address and serial numbers needed for authentication)

Technical Support

For technical help:
www.pakedge.com/portal
support@pakedge.com
(650) 385-8703

Find details of this product's 3-Year Limited Warranty at snapav.com/warranty, or request a paper copy from Customer Service at (866) 424-4489. Find other legal resources, such as regulatory notices and patent information, at snapav.com/legal.



11734 S. Election Road
Draper, UT 84020
(888) 400-4072

www.pakedge.com
sales@pakedge.com

©2021 Wirepath Home Systems, LLC. All Rights Reserved.

Latest version at
pkdge.co/wk1o-qsg



QSG-B001-G 2021-02-14 TW