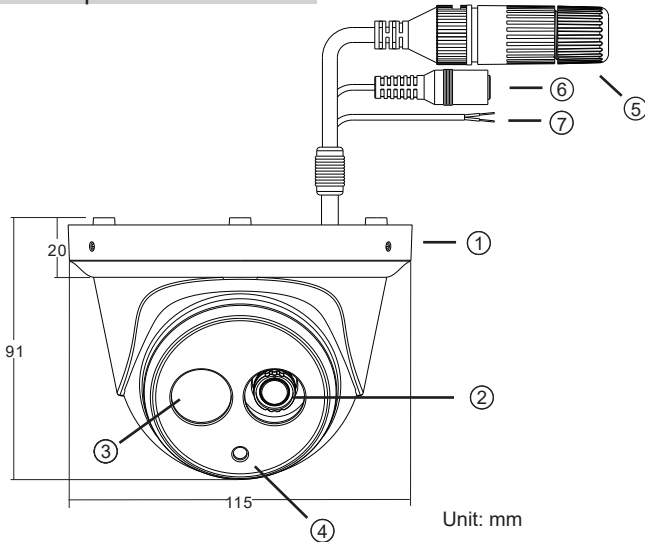




# Outdoor IP Turret Camera

## Instruction Manual

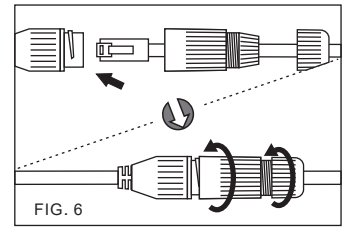
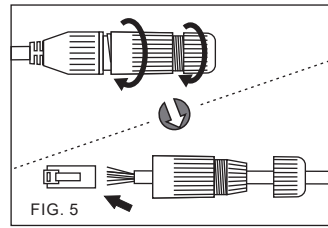
### Part Description & Dimensions



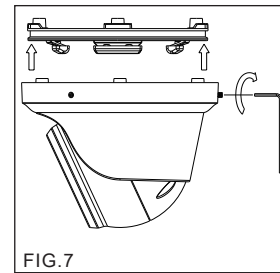
- ① Upper cover  
② Lens  
③ Infrared LED (IR LED)  
④ Light sensor  
⑤ RJ-45 Ethernet connector (supports PoE)  
⑥ Power jack (DC12V  $\pm$  10%)  
⑦ Reset wire (strip off the wire insulation if needed; after the camera is reset, cut off the bare wire)

Unit: mm

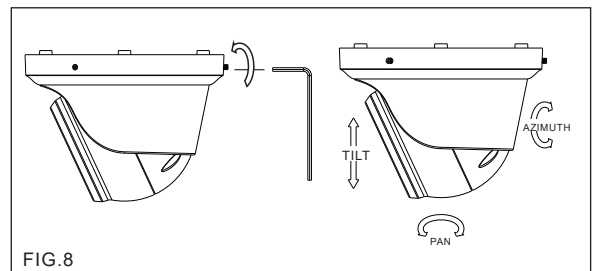
- Connect the RJ-45 cable to the waterproof connector. First, remove the waterproof connector and unscrew the waterproof nut. Insert the Ethernet cable and connect the RJ-45 connector with proper tools (FIG. 5). Then, tighten the waterproof connector and nut before the RJ-45 connector is connected to the camera (FIG. 6).



- Secure the upper cover to the bottom bracket with a hex key (FIG. 7).



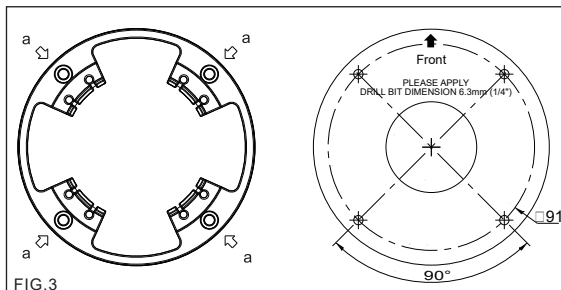
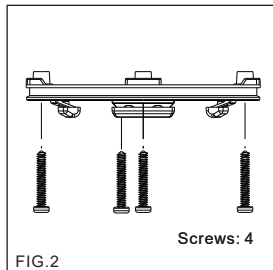
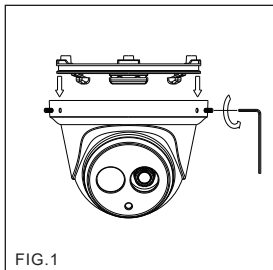
- Adjust the pan, tilt, and azimuth of the camera to the desired location (FIG. 8). After adjusting, tighten the screws to complete the installation.



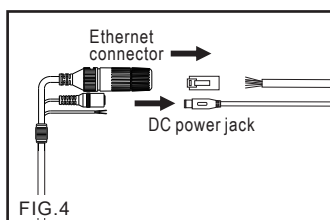
Make sure the light sensor is at the lowest side of the camera (FIG. 1).

### Installation

- Retrieve the camera and remove the bottom bracket from the upper cover with a hex key (FIG. 1). Use the included screws (M4.0x25) through the holes marked as "a," and affix the camera in the desired location (FIG. 2 & FIG. 3).



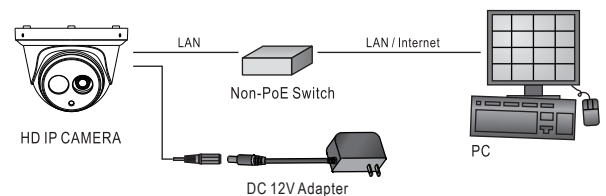
- Attach the Ethernet and power cables to the RJ-45 connector and the DC-in connector, respectively (FIG. 4).



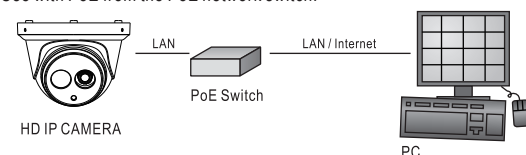
### System Architectures

For connecting this camera to the network, please follow one of these system architectures:

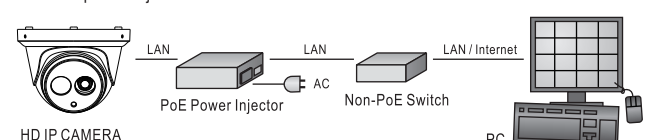
- Use a DC12V power adapter and a network switch connected to a network.



- Use with PoE from the PoE network switch.



- Use a PoE power injector between the non-PoE network switch and the IP camera.



Restore Factory Defaults

- To restore the hardware to factory default settings, please follow these steps:
1. Short the **RESET** wire for 10 seconds before releasing.
  2. The camera will be restored to factory default settings after approximately 90 seconds and will reboot automatically.
  3. Search for the IP device using the IPScan software.
  4. Start the IP device via an Internet browser.
  5. Enter the default username "admin" and password "pass" to operate.

**NOTE:** The IP address will revert to DHCP.

Before Accessing IP Cameras

Before accessing the IP camera, make sure that the camera's RJ-45 network, audio, and power cables are properly connected. To set the IP address, consult your network administrator for an available IP address. The default IP address mode for each IP camera is DHCP. Users can use the assigned IP address for verifying the camera's network connection.

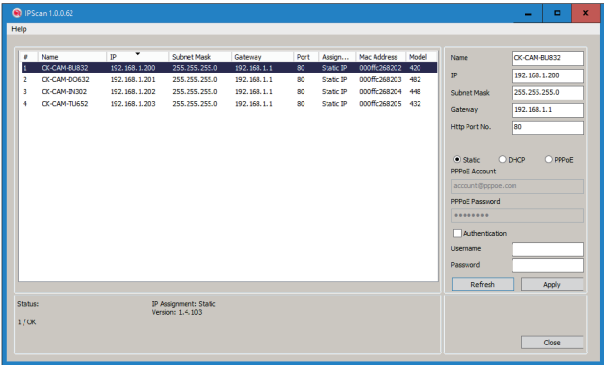
Software Requirements

Universal ActiveX software components are required for web interface display of JPEG or H.264 full HD video. When you log in to the IP camera with Internet Explorer, the security warning dialog box will prompt the installation of Universal ActiveX. Click Install to download it.



Configuring IP Addresses with IPScan Software

- To configure an IP address using IPScan, download it from [pkdgc.co/cameras](http://pkdgc.co/cameras). To change the settings of the IP address, subnet mask, gateway, or HTTP port, follow the steps below:
1. Run the IPScan software.
  2. Click **Refresh**. All available devices should be listed in the device list.
  3. Select your device from the list provided.
  4. Change the IP address, subnet mask, gateway, or HTTP port for the IP camera.
  5. Click **Apply** to submit the settings.
  6. Click **Refresh** to verify the settings.

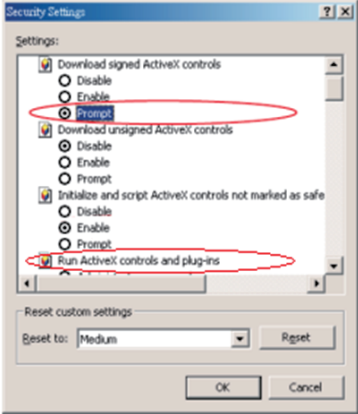


Configuring IP Addresses via a Web Interface

- To change an IP address via web interface, type the camera's assigned IP address in the Internet browser and follow the steps below:
1. Log in to the IP camera by the default username "admin" and default password "pass".
  2. Click **Basic Mode** configuration hyperlink.
  3. Click **Network->General** hyperlink.
  4. Change the IP address, subnet mask, gateway, or HTTP port for the IP camera.
  5. Click **Submit** to verify the settings.

Internet Browser Settings & Application Required

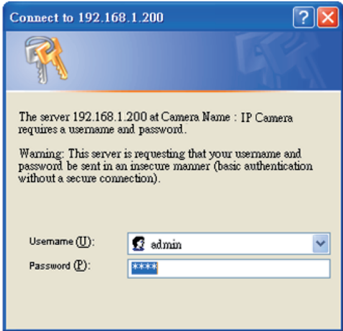
Make sure your Internet browser allows the signed ActiveX plug-in to work on your computer. Set "Download Signed ActiveX plug-in controls" to "Prompt" and "Run ActiveX control and plug-in" to "Enable." You can set this option via Internet Explorer > Tools > Options > Security Settings.



Once complete, you can access the IP camera's live video by entering the IP address via your Internet browser. As the security warning dialog box appears, click **OK** to download the ActiveX directly from the IP camera.

Logging In

There are two levels of user authentication, admin and guest, that can access the IP camera. Administrator is authorized to reset basic mode settings and see live video, while guest is allowed to see only live video.



The default usernames and passwords are as follows:

	Administrator
Username	admin
Password	pass

To log on to the IP camera, enter the camera's IP address in a web browser, then enter your username and password in the logon page and click **Submit**.

Note: This equipment has been tested and found to comply with the limits for a Class B digital device, pursuant to part 15 of the FCC Rules. These limits are designed to provide reasonable protection against harmful interference in a residential installation. This equipment generates, uses and can radiate radio frequency energy and, if not installed and used in accordance with the instructions, may cause harmful interference to radio communications. However, there is no guarantee that interference will not occur in a particular installation. If this equipment does cause harmful interference to radio or television reception, which can be determined by turning the equipment off and on, the user is encouraged to try to correct the interference by one or more of the following measures:

- Reorient or relocate the receiving antenna.
- Increase the separation between the equipment and receiver.
- Connect the equipment into an outlet on a circuit different from that to which the receiver is connected.
- Consult the dealer or an experienced radio/TV technician for help.