

D/N 4MP HD DOME IR IP CAMERA

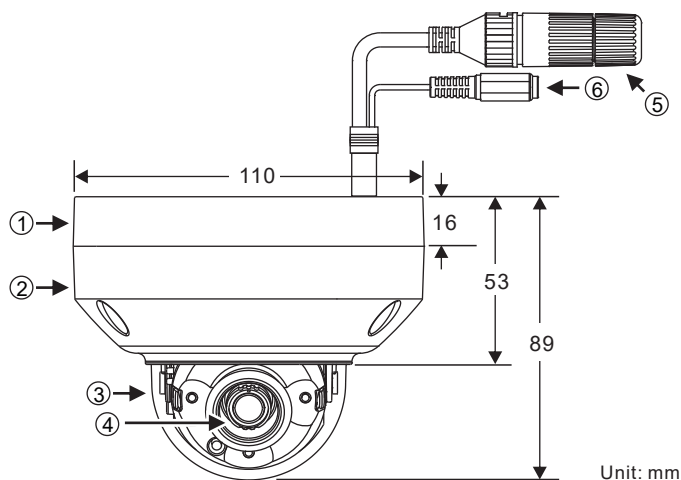


66-6342CTE-1B

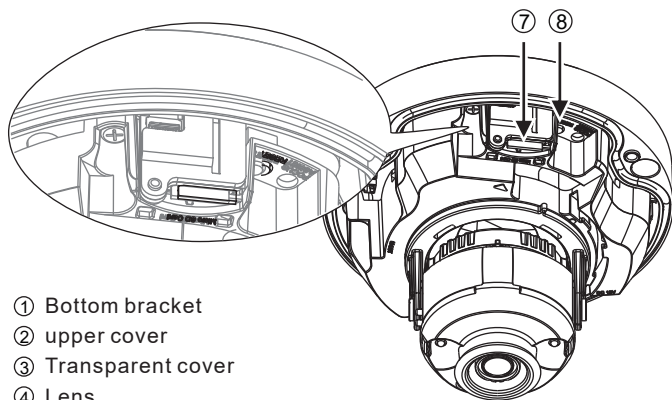
Warning: Do not throw your product in municipal waste. This product has been designed to enable proper reuse of parts and recycling. The symbol of the crossed out wheeled bin indicates that the product (electrical and electronic equipment) should not be placed in municipal waste. Check local regulations for disposal of electronics products.

Instruction Manual

Part Description & Dimensions



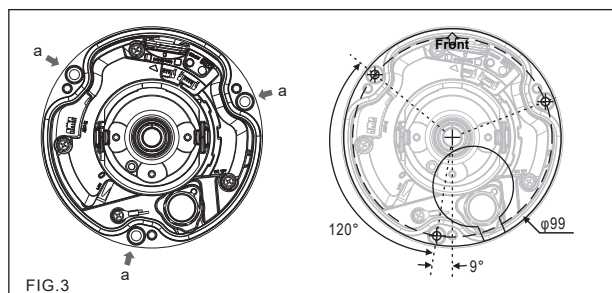
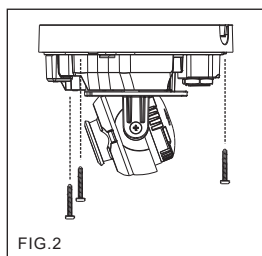
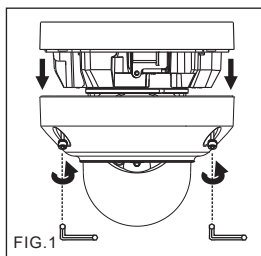
Unit: mm



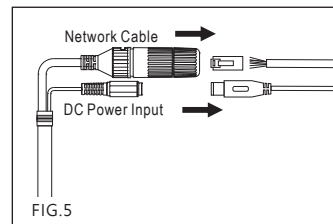
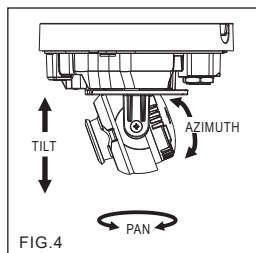
- ① Bottom bracket
- ② upper cover
- ③ Transparent cover
- ④ Lens
- ⑤ RJ-45 Ethernet connector (supports PoE)
- ⑥ Power jack (DC12V \pm 10%)
- ⑦ Micro SD card slot
- ⑧ Factory default button

Installation

- Retrieve the camera and remove the bottom bracket from the upper cover with a hex key (FIG.1). Use the included screws (M4.0x25) through the holes marked as "a," and fix the camera in the desired location (FIG.2 & FIG.3).

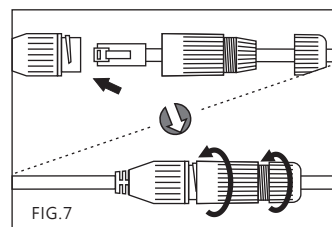
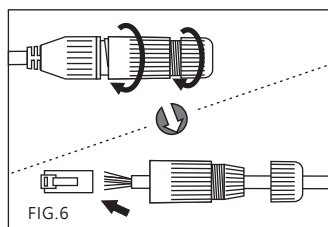


- Adjust the pan, tilt, and azimuth of the camera to the desired location (FIG.4). Adjust the zoom and focus for the best image, and tighten the screws after the adjustment for manual varifocal models (FIG.4).

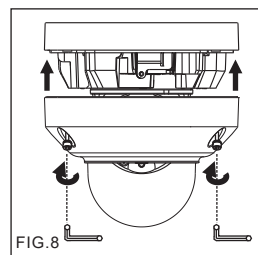


- Attach the Ethernet and power cables to the RJ-45 connector and the DC-in connector, respectively (FIG.5).

- Connect the RJ-45 Ethernet cable with a waterproof connector. First, remove the waterproof connector and unscrew the waterproof nut. Insert the Ethernet cable and connect to the RJ-45 connector with proper tools (FIG.6). Then, tighten the waterproof connector and nut before the RJ-45 connector is connected to the camera (FIG.7).



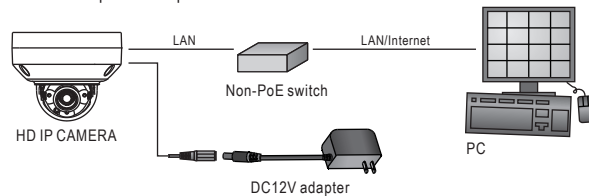
- Secure the upper cover to the bottom bracket with a hex key (FIG.8).



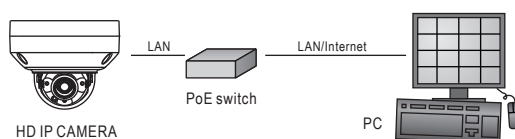
System Architectures

For connecting D/N 1080P HD IP Camera series to the network, please follow one of the system architectures:

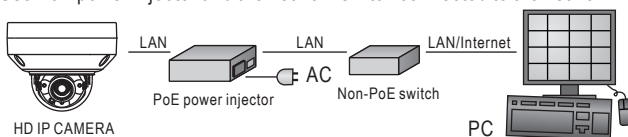
- Use a DC12V power adapter and a network switch connected to a network.



- Use with PoE of the network switch connected to the network.



- Use PoE power injector and the network switch connected to the network.



Restore Factory Defaults

- To restore the hardware to factory default settings, please follow these steps:
1. Press and hold **Reset** for 10 seconds and release.
 2. The camera will be restored to factory default settings after approximately 90 seconds and will reboot automatically.
 3. Search for the IP device using the IPScan software.
 4. Start the IP device via an Internet browser.
 5. Enter the default username "admin" and password "pass" to operate.

NOTE: The IP address will revert to DHCP.

Before Accessing IP Cameras

Before accessing the IP camera, make sure that the camera's RJ-45 network, audio, and power cables are properly connected. To set the IP address, consult your network administrator for an available IP address. The default IP address mode for each camera is DHCP. Users can use the assigned IP address to verify the camera's network connection.

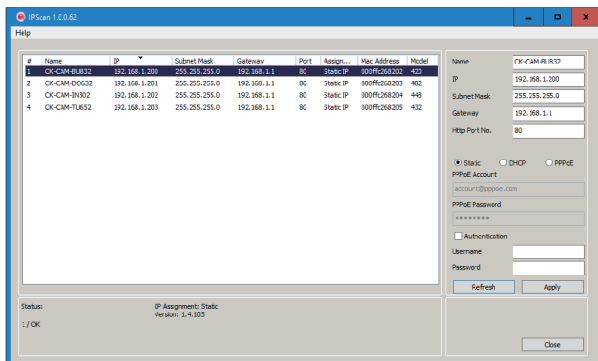
Software Requirements

Universal ActiveX software components are required for online display of JPEG or H.264 Full HD video. When you log in to the IP camera from Internet Explorer, a security warning dialog box will prompt the installation of the Universal ActiveX plug-in. Click **Install** or **Allow** to download it.



Configuring IP Addresses with IPScan Software

- To configure an IP address using IPScan, download it from pkdgc.co/cameras. To change the settings of the IP address, subnet mask, gateway, or HTTP port, follow the steps below:
1. Run the IPScan software.
 2. Click **Refresh**. All available devices should be listed in the device list.
 3. Select your device from the list provided.
 4. Change the IP address, subnet mask, gateway, or HTTP port for the IP camera.
 5. Click **Apply** to submit the settings.
 6. Click **Refresh** to verify the settings.



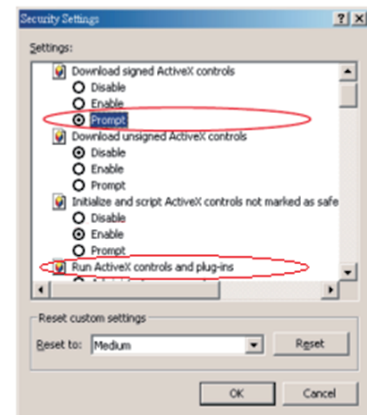
Configuring IP Addresses via Web Interface

To change an IP address via a web interface, type the camera's assigned IP address in the Internet browser and follow the steps below:

1. Log in to the camera with the default username "admin" and default password "pass".
2. Click **Basic Mode**.
3. Click **Network > General**.
4. Change the IP address, subnet mask, gateway, or HTTP port for the IP camera.
5. Click **Submit** to verify the settings.

Internet Browser Settings & Application Required

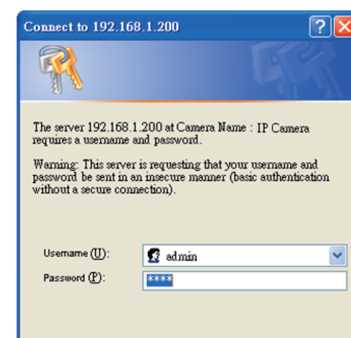
Make sure your Internet browser allows the signed ActiveX plug-in to work on your computer. Open Internet Explorer and go to **Tools > Options > Security Settings**. Set "Download Signed ActiveX plug-in controls" to "Prompt" and "Run ActiveX control and plug-in" to "Enable".



Once complete, you can access the IP camera's live video by entering the IP address via your Internet browser. When the security warning dialog box appears, click **OK** to download the ActiveX plug-in directly from the IP camera.

Login

There are two levels of user authentication (admin and guest) that can access the IP camera. An administrator is authorized to reset basic mode settings and see live video, while a guest is only allowed to see live video.



The default username and password is as follows:

	Administrator
Username	admin
Password	pass

To log on to the IP camera, please enter the username and password on the login page and click **Submit** to enter the system.

Note: This equipment has been tested and found to comply with the limits for a Class B digital device, pursuant to part 15 of the FCC Rules. These limits are designed to provide reasonable protection against harmful interference in a residential installation. This equipment generates, uses and can radiate radio frequency energy and, if not installed and used in accordance with the instructions, may cause harmful interference to radio communications. However, there is no guarantee that interference will not occur in a particular installation. If this equipment does cause harmful interference to radio or television reception, which can be determined by turning the equipment off and on, the user is encouraged to try to correct the interference by one or more of the following measures:

- Reorient or relocate the receiving antenna.
- Increase the separation between the equipment and receiver.

- Connect the equipment into an outlet on a circuit different from that to which the receiver is connected.
- Consult the dealer or an experienced radio/TV technician for help.