

Faceplate Installation Guide

For C4-FPx-C-x, C4-V-FPx-C-x, C4-FP2-COMBO-x faceplates



WARNING! Turn off local electrical power to avoid **SERIOUS INJURY** or **DEATH** before installing, removing, or replacing the faceplate.

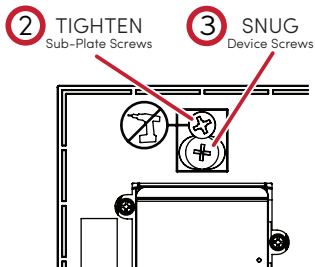
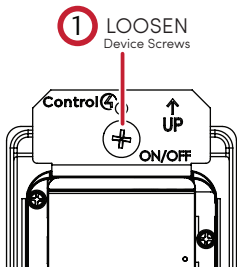
Installation

- The faceplate and subplate ship snapped together. Separate them with your fingers.
- Loosen the screws attaching the devices to the wall box.
- Use the screws provided to tightly secure the subplate to all devices, ensuring proper alignment of all devices.
- Lightly tighten the assembly to the wall box, securing all device screws.
Caution: To maintain a flat surface for faceplate installation, do not over-tighten.
- Snap the faceplate onto the subplate.
- Press firmly around the outside edges of the faceplate to ensure a tight fit.

Removal

- To remove the faceplate, gently pull with your fingertips from the top or bottom edge.

Control 



Control4

<https://tech.control4.com/s/contactsupport> • TechSupport@SnapOne.com • tech.control4.com/technician
Find details of the product's Limited Warranty at snapone.com/legal/ or request a paper copy from Customer Service at 866.424.4489. Find other legal resources, such as regulatory notices and patent and safety information, at snapone.com/legal/
Copyright ©2022, Snap One, LLC. All rights reserved. Snap One and its respective logos are registered trademarks or trademarks of Snap One, LLC (formerly known as Wirepath Home Systems, LLC), in the United States and/or other countries. Control4 is also a registered trademark of Snap One, LLC. Snap One makes no claim that the information contained herein covers all installation scenarios and contingencies, or product use risks. Information within this specification subject to change without notice. 20210901-1912
Part # 200-00669-C.1