



---

Control4 Smart Home  
OS 3.2.0 Release Notes



# Contents

To view the online version of this document, go to [ctrl4.co/releasesnotes](http://ctrl4.co/releasesnotes).

<b>Contents</b>	<b>2</b>
<b>1 Introduction</b>	<b>3</b>
<b>2 Control4 Chime Video Doorbell</b>	<b>3</b>
2.1 Motion Zones	4
2.2 Events	4
<b>3 Intercom Playback</b>	<b>4</b>
3.1 Control4 App for OS 3 with Intercom	4
3.2 History View	5
<b>4 SR-260 Volume Feedback and Icons</b>	<b>6</b>
<b>5 DriverWorks SDK – Add Device API</b>	<b>7</b>
<b>6 Composer Pro Changes</b>	<b>7</b>
<b>7 Firmware Changes</b>	<b>7</b>
<b>8 Life Cycle Changes</b>	<b>8</b>
8.1 Upgrade path	8
<b>9 Software Product Release Versions</b>	<b>8</b>
<b>10 Technical Support Contact Information</b>	<b>8</b>
<b>11 Legal Notices</b>	<b>8</b>

# 1 Introduction

The Control4 Smart Home OS 3.2.0 is a big step forward for homeowners' peace of mind with new hardware, tools, and features that provide deeper insight to the security and recent history of their home. This is then wrapped into a holistic, single history display that provides easy interaction. This is a full-featured release suited for all new projects as well as upgrades from previous OS versions.

## 2 Control4 Chime Video Doorbell

Introducing the Control4 Chime Video Doorbell, the first video doorbell designed specifically for the smart home. With Chime, see and talk to visitors at the door right from the Control4 mobile app or touchscreen. While communicating with someone on the porch, you can simultaneously disarm the alarm, turn on the lights, and invite your guests in—all from the Control4 user interface.

Chime is engineered with a sharp 5MP camera, crisp two-way audio for natural conversations, night mode for a clear picture in low-light settings, and a near 180° field of view to monitor more than just the porch. View video event recordings for up to a week and personalize up to five motion zones with customized sensitivity control to ensure you are notified when it matters most. Receive notifications with video or snapshots when motion is detected, or the doorbell is pressed—while home or away.

Chime is elegantly designed with black or brush-nickel finish and is available in Wi-Fi and PoE versions so it can be installed on any home. Satin nickel PoE is available today and ready for your next smart home project. Satin nickel Wi-Fi will be available in November for those tough retrofits, and the black finish will be coming in early 2021. Stay Tuned!



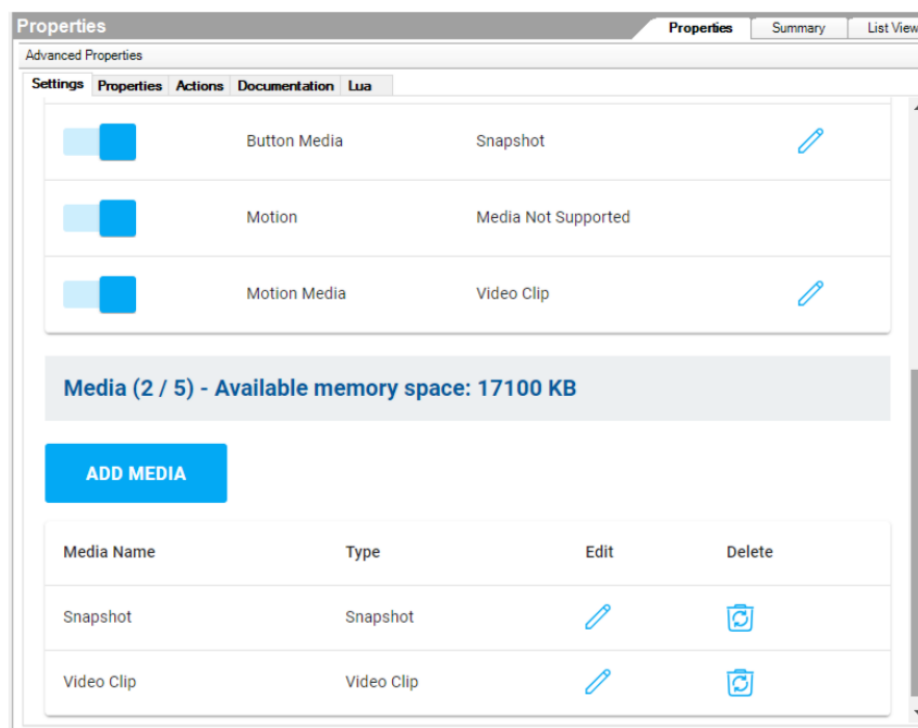
## 2.1 Motion Zones

Every installation is unique, and there are always portions of the camera's view that are important (front porch) and others that simply don't matter (sidewalk or traffic on a road). With Chime, you can set up to five motion zones in Composer Pro and adjust the sensitivity for each, making fine tuning a breeze. This helps dealers configure and highlight areas homeowners care about and reduce unwanted notifications.

## 2.2 Events

Chime events give dealers a powerful tool for fine-tuned configuration of events. For example, a video clip or snapshot image can be captured every time the doorbell is pressed or when motion is detected. While capture works well out of the box, discerning dealers can configure deeper snapshot and video settings such as pre- and post-event record time and number of snapshots generated. The recorded events conveniently show up under the new History view in touchscreens and mobile apps. (See more in Section [3 Intercom Playback](#).)

*Driver Event / Media Configuration within Composer Pro:*



## 3 Intercom Playback

With the release of the Control4 Chime Video Doorbell, in combination with improvements to the Control4 app for OS 3 and the addition of the History agent, built-in Intercom playback is supported directly from the Control4 app. If you missed an Intercom call, you can view a clip directly from the app and view the event in the History view of your mobile app or T3/T4 touchscreen.

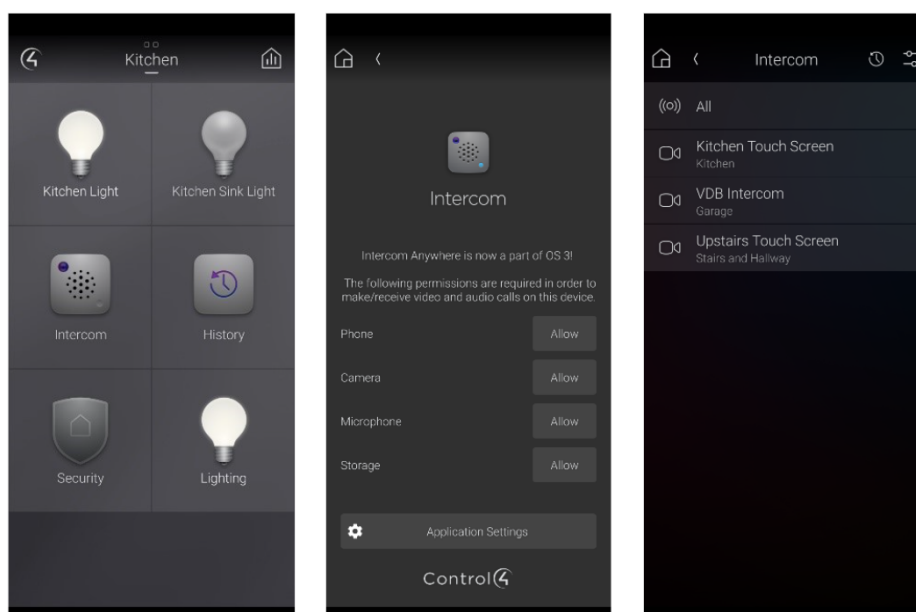
### 3.1 Control4 App for OS 3 with Intercom

Intercom Anywhere is now integrated directly into the Control4 Android OS 3 app, so customers no longer need a separate Intercom Anywhere app. Additionally, the intercom functionality, including call and notifications, now works with multiple

Control4 customer systems simultaneously and no longer requires selecting a single system for receiving notifications. Customers no longer need to choose which Control4 system they would like to receive intercom calls from again. Just add all your systems into the OS 3 mobile app and start receiving calls and notifications from all your systems.

### Notes:

- The iOS will support the same exciting functionality in an upcoming release. Stay tuned for more!
- iPads and Android tablets are not supported; Intercom is currently supported only on mobile phones.
- Due to VoIP restrictions from the Ministry of China, we are currently unable to support Intercom on mobile in the Chinese markets.

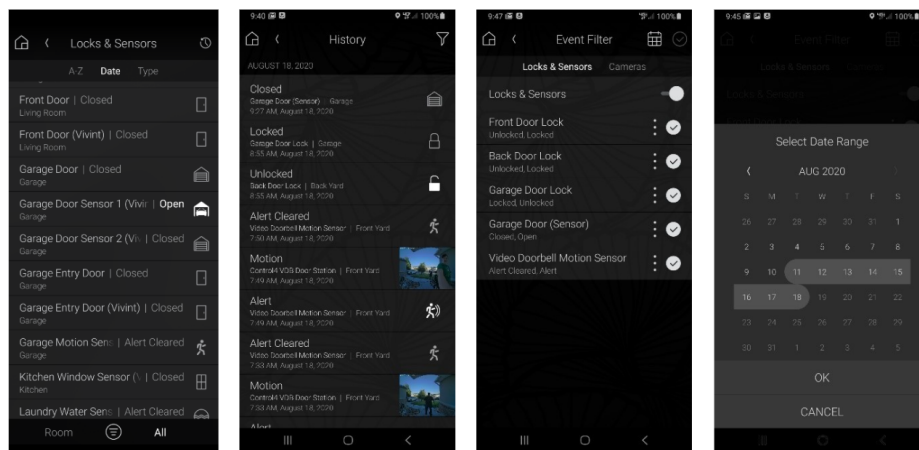


## 3.2 History View

There is now a powerful tool in OS 3 mobile apps and T3/T4 touchscreens for finding important events and following their timelines. This allows customers to see the history of events within the following experiences: Intercom, Cameras, Locks & Sensors, Screens & Lifts, Comfort Extras, and Security Panels. For example, what time was the front door locked last night? Who came to my door while I was out? What time did my sprinklers run?

The History agent records up to 200,000 events over a 14-day period. These events can be filtered by both event type and date range. So, narrowing down to specific events over a day or two becomes a breeze. Not only is there a global history view, but individual experiences, such as locks and sensor, also have a filtered history view, so it's easy to see the history while within an individual experience.

**Note:** Drivers may require updates for their information to be correctly populated in the History agent and displayed inside the mobile app.



### Supported devices:

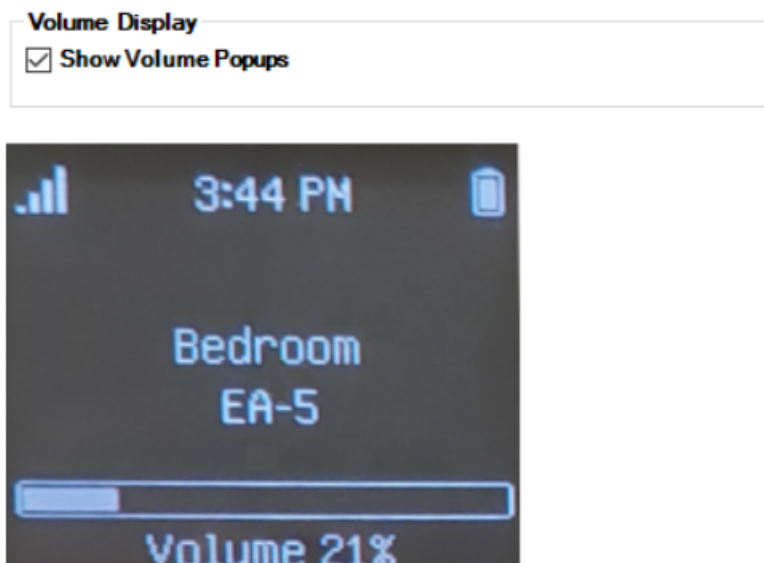
Chime Video Doorbell Camera  
 Door Opener  
 Driveway Heater  
 Fireplace  
 Garage Door Sensor  
 Glass Break Detector  
 IR Beam Detector  
 Motorized Screen  
 Radiant Floor  
 Smoke Detector  
 Window Sensor

CO Detector  
 Door Stations  
 Driveway Sensor  
 Fountain  
 Gate Opener  
 Heat Detector  
 Motion Sensor  
 Pressure Sensor  
 Security Panel  
 Sprinklers

Door Locks  
 Doorbell Sensor  
 Fan  
 Garage Door  
 Opener  
 Gate Sensor  
 Humidity  
 Detector  
 Motorized Lift  
 Pump  
 Security System  
 Water Sensor

## 4 SR-260 Volume Feedback and Icons

This popular feature was first introduced with the Neeo Remote and is now included with the SR-260 remote. The SR-260 can now show volume feedback for rooms with discrete volume. Note that this feature doesn't work for IR-controlled devices. This feature can be enabled or disabled within the driver and is enabled by default with OS 3.2.0.



There are also new icons and text for added clarification. For example, when setting up an SR-260, new icons and descriptions are available for situations like adding to network, lost network, found network, etc. These new icons and descriptions can help to quickly troubleshoot network issues for the homeowners.

## 5 DriverWorks SDK – Add Device API

Third-party driver developers can now use the **C4:AddDevice()** API in Control4 drivers. That means that more third-party drivers can auto-configure the installation of supporting drivers and the configuration between drivers. Using the Roku driver to add channel mini-drivers or using the Add Music driver to add music services are great examples of the power the Add Device API provides. It streamlines configuring by reducing manual steps in installing drivers and making connections between them. For example, a Denon AVR driver can automatically add a Heos MSP driver when the AVR is configured for Heos.

More information can be found [here](#).

## 6 Composer Pro Changes

Composer Pro is more stable in OS 3.2.0, with 16 “crash” bugs resolved. Also, there are new icons for the main navigational tabs and 38 fixes for minor annoyances like misspellings, visual misalignments, missing images, etc. Additionally, the terminal and virtual director underwent various minor improvements.

## 7 Firmware Changes

Device	Firmware Version
Gen3i Switch (C4-SSW240)	1.2.4.d3b8ab7
Gen3i Dual Channel Switch (C4-SDSW240)	1.2.3.9c4abdc
System Remote Control SR-260 (C4-SR260)	2.2.27.24e46dc

## 8 Life Cycle Changes

No new life cycle changes with OS 3.2.0.

### 8.1 Upgrade path

To upgrade to OS 3.2.0, current Control4 systems must be OS 2.10.0 or higher.

## 9 Software Product Release Versions

Control4 software releases (since 3.x)		
Release 3.0.x		
Tuesday, May 22, 2019	3.0.0.562835-res	Initial Release – New user experience and Composer enhancements.
Friday, June 11, 2019	3.0.0.563304 -res	Maintenance Release that supersedes the previous 3.0.0.562835-res version
Release 3.1.x		
Wednesday, September 11, 2019	3.1.0.566775-res	Initial Release – CA-10, Google Assistant, Composer Pro version independence, Intercom Anywhere expansion, OSD lighting, Sessions, pinch and zoom on Android
Tuesday, September 17, 2019	3.1.1.569774-res	Maintenance Release – Security update with default password removal. OSD room change.
Wednesday, March 4, 2020	3.1.2.571828-res	Maintenance Release – Faster camera snapshots, and defect fixes.
Wednesday, May 27, 2020	3.1.3.574826-res	Maintenance Release – Access agent, Composer package management structure changes, component updates for OSD and T3, and defect fixes.
Release 3.2.x		
Tuesday, October 13, 2020	3.2.0.586513-res	Full Release – Video doorbell, Control4 OS 3 Mobile App with Intercom, History View, SR-260 volume feedback, Driver add Driver SDK

## 10 Technical Support Contact Information

If you encounter any issues during or following the update, or if you have any questions, please contact Control4 Technical Support for assistance.

USA	(888) 400-4072
UK	+44 1347 300001
Germany	+49 69 9675 9797
Australia	+61 18 0099 0548
China	+86 400 8428136

For support in regions covered by a distribution partner, contact your distributor.

## 11 Legal Notices

This document is confidential and is only made available to authorized Control4 Dealers who have agreed to terms of confidentiality under the Control4 Non-Disclosure



Agreement. These terms must be maintained and pertain to information found in this document.

Information in this document, including URL and other Internet website references, is subject to change without notice and is provided for informational purposes only. The entire risk of the use or results of the use of this document remains with the user, and Control4 makes no warranties, either express or implied. Complying with all applicable copyright laws is the responsibility of the user. Without limiting the rights under copyright, no part of this document may be reproduced, stored in or introduced into a retrieval system, or transmitted in any form or by any means (electronic, mechanical, photocopying, recording, or otherwise), or for any purpose, without the express written permission of Control4.

Control4 may have patents, patent applications, trademarks, copyrights, or other intellectual property rights covering subject matter in this document. Except as expressly provided in any written license agreement from Control4, the furnishing of this document does not give you any license to patents, trademarks, copyrights, or other intellectual property.

This document is for reference purposes only, and it is provided only as advice to Dealers. Each system setup is unique and customized to a specific customer's needs. It is the Dealer's responsibility to make sure the system is compatible before making any changes and installing any updates. In addition, it is the Dealer's responsibility to get the customer's permission before accessing the customer's system and making any changes or installing any updates.

#### About Control4

Control4, a leading provider of the operating system for the smart home, delivers intelligent control of consumer electronics products, appliances and networking systems through an easy-to-use and intuitive software interface. Founded in 2003, the company delivers affordable automation and control of lighting, music, video, HVAC, security, and energy management systems to the broad market through more than 1,600 custom integrators, retail outlets, and distributors in over 65 countries. Control4 is the platform of choice for major consumer electronics companies, hotels, businesses and utilities that require an intelligent, open and affordable control solution. For more information, visit [www.control4.com](http://www.control4.com).

#### Disclaimer

Control4 makes no representations or warranties with respect to this publication, and specifically disclaims any express or implied warranties of merchantability or fitness for any particular purpose. Control4 reserves the right to make changes to any and all parts of this publication at any time, without any obligation to notify any person or entity of such changes.

#### Licenses

##### *GNU*

GNU GENERAL PUBLIC LICENSE TERMS AND CONDITIONS FOR COPYING, DISTRIBUTION AND MODIFICATION (Section 3.b.)

You may copy and distribute the Program (or a work based on it, under Section 2) in object code or executable form under the terms of Sections 1 and 2 above provided that you also do one of the following:

Accompany it with a written offer, valid for at least three years, to give any third party, for a charge no more than your cost of physically performing source distribution, a complete machine-readable copy of the corresponding source code, to be distributed under the terms of Sections 1 and 2 above on a medium customarily used for software interchange.

The complete text for this license is available on the Control4 website.

##### *Gracenote*

Gracenote®, Gracenote logo and logotype, and the "Powered by Gracenote" logo are either a registered trademark or a trademark of Gracenote, Inc. in the United States and/or other countries. Music and DVD recognition technology and related data are provided by Gracenote—Gracenote is the industry standard in Music and DVD recognition technology and related content delivery. For more information visit [www.gracenote.com](http://www.gracenote.com).

##### *Spread*

This product uses software developed by Spread Concepts LLC for use in the Spread toolkit. For more information about Spread see <http://www.spread.org>.

##### *Libertas*

Libertas Firmware copyright statement for Touch Screens 6/26/09

Copyright (c) 2006, One Laptop per Child and Marvell Corporation. All rights reserved.

Redistribution—Redistribution and use in binary form, without modification, are permitted provided that the following conditions are met:

\* Redistributions must reproduce the above copyright notice and the following disclaimer in the documentation and/or other materials provided with the distribution.

\* Neither the name of Marvell Corporation nor the names of its suppliers may be used to endorse or promote products derived from this software without specific prior written permission.

\* No reverse engineering, decompilation, or disassembly of this software is permitted.

\* You may not use or attempt to use this software in conjunction with any product that is offered by a third party as a replacement, substitute or alternative to a Marvell Product where a Marvell Product is defined as a proprietary wireless LAN embedded client solution of Marvell or a Marvell Affiliate.

DISCLAIMER—THIS SOFTWARE IS PROVIDED BY THE COPYRIGHT HOLDERS AND CONTRIBUTORS "AS IS" AND ANY EXPRESS OR IMPLIED WARRANTIES, INCLUDING, BUT NOT LIMITED TO, THE IMPLIED WARRANTIES OF MERCHANTABILITY AND FITNESS FOR A PARTICULAR PURPOSE ARE DISCLAIMED. IN NO EVENT SHALL THE COPYRIGHT OWNER OR CONTRIBUTORS BE LIABLE FOR ANY DIRECT, INDIRECT, INCIDENTAL, SPECIAL, EXEMPLARY, OR CONSEQUENTIAL DAMAGES (INCLUDING, BUT NOT LIMITED TO, PROCUREMENT OF SUBSTITUTE GOODS OR SERVICES; LOSS OF USE, DATA, OR PROFITS; OR BUSINESS INTERRUPTION) HOWEVER CAUSED AND ON ANY THEORY OF LIABILITY, WHETHER IN CONTRACT, STRICT

LIABILITY, OR TORT (INCLUDING NEGLIGENCE OR OTHERWISE) ARISING IN ANY WAY OUT OF THE USE OF THIS SOFTWARE, EVEN IF ADVISED OF THE POSSIBILITY OF SUCH DAMAGE.

## Copyright

Copyright ©2020, Wirepath Home Systems, LLC. All rights reserved. Control4 and Snap AV and their respective logos are registered trademarks or trademarks of Wirepath Home Systems, LLC, dba "Control4" and/or dba "SnapAV" in the United States and/or other countries. 4Store, 4Sight, Control4 My Home, Snap AV, Araknis, Autonomic, BakPak, Binary, Dragonfly, Episode, Luma, Mockupancy, Nearus, NEEO, OvrC, Pakedge, Sense, Strong, SunbriteTV, Triad, Visualant, WattBox, and Wirepath are also registered trademarks or trademarks of Wirepath Home Systems, LLC. Other names and brands may be claimed as the property of their respective owners. All specifications subject to change without notice.

## Z-Wave

The Z-Wave trademark and logo are owned by Sigma Designs, Inc.

## Contact Information

Control4 Corporation  
11734 S. Election Road  
Salt Lake City, UT 84020 USA  
<http://www.control4.com>

Part Number: DOC-00506, Rev. A (OS 3.2.0) MS  
Control4 Smart Home OS 3.2.0 Release Notes