



---

Control4 Smart Home  
OS 3.1.1 Release Notes



# Contents

To view the online version of this document, go to [ctrl4.co/releasenotes](http://ctrl4.co/releasenotes).

<b>Contents</b> .....	<b>2</b>
<b>1 Introduction</b> .....	<b>2</b>
<b>2 Security Update - Removal of Default Password</b> .....	<b>2</b>
2.1 Common Questions .....	3
<b>3 TV On-Screen Interface Room Change</b> .....	<b>5</b>
<b>4 Composer Pro Changes</b> .....	<b>5</b>
<b>5 Composer Express Changes</b> .....	<b>5</b>
<b>6 Life Cycle Changes</b> .....	<b>5</b>
6.1 Upgrade Path .....	6
<b>7 Software Product Release Versions</b> .....	<b>6</b>
<b>8 Technical Support Contact Information</b> .....	<b>6</b>
<b>9 Legal Notice</b> .....	<b>6</b>
<b>About Control4</b> .....	<b>8</b>

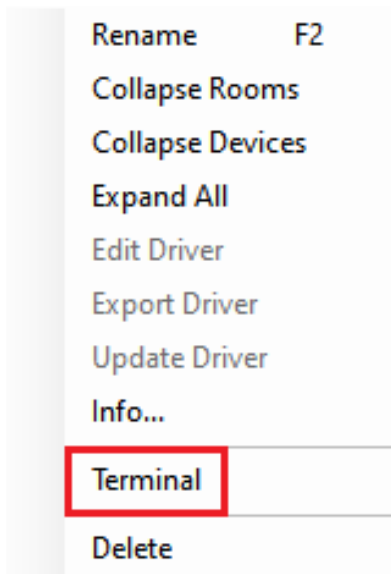
## 1 Introduction

The Control4 Smart Home OS 3.1.1 (OS 3.1.1) release is a maintenance release targeted at improving security through the removal of the default password throughout the system. There have also been enhancements for the TV On-Screen Interface and Composer. This release is intended for both new and existing installations.

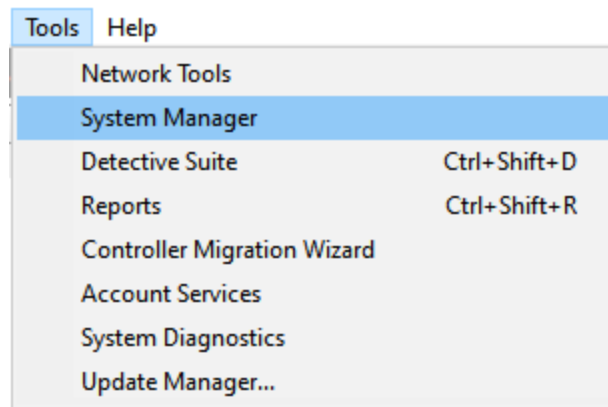
## 2 Security Update – Removal of Default Password

With OS 3.1.1, Control4 has taken a large step in making Control4 systems more secure. The core change is the elimination of a system default password. For most scenarios, there will be no change to the dealer or homeowner experience. Below are the experiences that have changed:

- The standalone app for Network Tools has been removed since it relied on the default system password. All the same information is found in Composer Pro > Connections > Network.
- Dealers no longer need to enter or change the system password for a controller identified in an OS 3.1.1 or later project.
- Though most dealers never need to get terminal access to a controller. Dealers accustomed to using PuTTY to get terminal access to controllers can now do so directly from Composer Pro (either remote or local) by right-clicking on the device on the Project Tree within the System Design or Connection views, or within System Manager.



- System Manager Web interface was removed because it relied on the default system password. You can access System Manager through the standalone app or through Composer.



- If a T3 Touch Screen is added to an OS 3.1.1 system and the touch screen is on an older image than OS 3.1.1, it will show that it is trying to constantly connect until it is updated to OS 3.1.1. This is due to the default password being removed, and the solution is to update the touch screen.

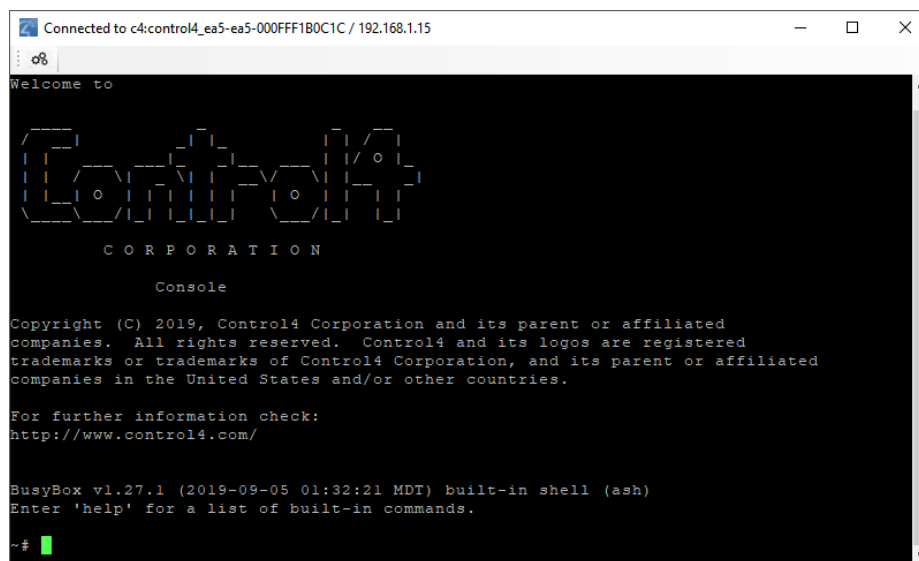
## 2.1 Common Questions

### **How will I use Composer to access controllers if there is no default password?**

Composer can always access a controller locally. For remote connections, authorized technicians from the dealer of record, logged into Composer, can access their customers' systems.

### **How do I SSH into a primary or secondary device?**

Most dealers should never need to do this. However, if the need arises and you know what you are doing, this can now only be done using Composer Pro. Once connected to a project, in the Project Tree in System Design and Connections views, right-click on an IP device to raise the context menu. If the device is identified, online, and supports SSH, select the Terminal... menu item to launch a terminal console window. The user can repeat this to launch multiple terminal windows on a single device.



### **How will I carry out operations on controllers that formerly required a third-party SSH tool like PuTTY?**

Beginning with OS 3.1.1, Composer Pro is the only way to establish a console connection to Control4 devices.

### **What changes for the homeowner?**

On rare occasions, touch screens would ask the homeowner to enter the system password on their touch screens. This is no longer the case.

### **What happens with a network or factory reset?**

After the controller is network or factory reset, the controller is assigned the legacy system password until the controller is identified into a project. At that point, the legacy system password is removed and can no longer be used to access the controller.

### **What changes for the projects before OS 3.1.1?**

Nothing changes for any customer/user on projects prior to OS 3.1.1. Older versions will still have a system password.

### **Why is Control4 making this change?**

We are always striving to make our products more secure.

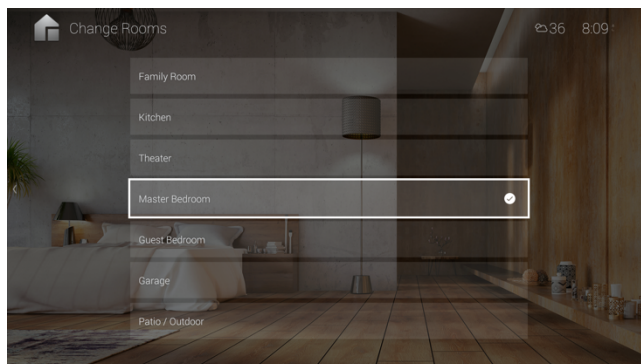
### **What about the “cabin” scenario where there is no internet access to the controller?**

Homeowners need to authenticate with customer.control4.com credentials in the mobile customer interface app which requires internet access. After a successful login, their mobile app will work in the cabin case.

Similarly, dealers will need to authenticate in Composer while internet connected before going into the “cabin” scenario.

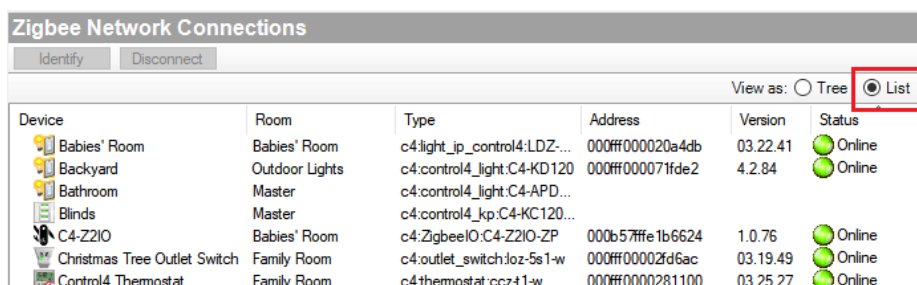
### 3 TV On-Screen Interface Room Change

With the release of OS 3.1.1, the TV on-screen interface now offers room changing. Homeowners can see supported experiences, devices, and services in any room, including: Watch, Listen, Security Cameras, Lighting, and Custom Buttons, plus favorites to devices with state and toggle on/off support.



### 4 Composer Pro Changes

- Fixed confusing messaging when upgrading from an OS 3.0 or OS 3.1 project and unnecessarily showing the Upgrade Advisor.
- Back by popular demand, the List View option has returned into Zigbee Network tab.



- Fixed a bug where favorites were not restored after controller migration.

### 5 Composer Express Changes

Composer Express has been updated to work with the newest release of the Control4 OS 3.1.1.

- Fixed customer account list scrolling bug

### 6 Life Cycle Changes

- Composer Media Edition has been discontinued for OS 3.1.1 and forward. This is related to the security changes to eliminate the default password. Homeowners who require this functionality can work with their dealer to get Composer Home Edition.
- The System Manager Web interface found when navigating to the Controller's IP address in a browser has been discontinued because it also relied on the default system password. Dealers can use the System Manager that ships with Composer Pro,

found in same directory as the Composer Pro executable, or from within Composer Pro by going Tools > System Manager.

- The standalone app for Network Tools has been sunset since it also relied on the default system password. All the same information is found in Composer Pro > Connections > Network.

## 6.1 Upgrade Path

To upgrade to OS 3.1.1, current Control4 systems must be OS 2.9.0 or higher.

# 7 Software Product Release Versions

### Control4 software releases (since 3.x)

#### Release 3.0.x

Tuesday, May 22, 2019	3.0.0.562835-res	Initial Release – New user experience and Composer enhancements.
-----------------------------	------------------	--

	3.0.0.563304 -res	Maintenance Release that supersedes the previous 3.0.0.562835-res version
--	-------------------	---

#### Release 3.1.x

Wednesday, September 11, 2019	3.1.0.566775-res	Initial Release – CA-10, Google Assistant, Composer Pro version independence, Intercom Anywhere expansion, OSD lighting, Sessions, pinch and zoom on Android
-------------------------------------	------------------	--

Tuesday, December 17, 2019	3.1.1.569774-res	Maintenance Release – Security update with default password removal. OSD room change.
----------------------------------	------------------	---

# 8 Technical Support Contact Information

If you encounter any issues during or following the update, or if you have any questions, please contact Control4 Technical Support for assistance.

USA	(888) 400-4072
UK	+44 1347 300001
Germany	+49 69 9675 9797
Australia	+61 18 0099 0548
China	+86 400 8428136

For support in regions covered by a distribution partner, contact your distributor.

# 9 Legal Notice

This document is confidential and is only made available to authorized Control4 Dealers who have agreed to terms of confidentiality under the Control4 Non-Disclosure Agreement. These terms must be maintained and pertain to information found in this document.

Information in this document, including URL and other Internet website references, is subject to change without notice and is provided for informational purposes only. The entire risk of the use or results of the use of this document remains with the user, and Control4 makes no warranties, either express or implied. Complying with all applicable copyright laws is the responsibility of the user. Without limiting the rights under copyright, no part of this document may be reproduced, stored in or introduced into a retrieval system, or transmitted in any form or by any means (electronic, mechanical, photocopying, recording, or otherwise), or for any purpose, without the express written permission of Control4.

Control4 may have patents, patent applications, trademarks, copyrights, or other intellectual property rights covering subject matter in this document. Except as expressly provided in any written license agreement from Control4, the furnishing of this document does not give you any license to patents, trademarks, copyrights, or other intellectual property.

This document is for reference purposes only, and it is provided only as advice to Dealers. Each system setup is unique and customized to a specific customer's needs. It is the Dealer's responsibility to make sure the system is compatible before making any changes and installing any updates. In addition, it is the Dealers responsibility to get the customer's permission before accessing the customer's system and making any changes or installing any updates.

# About Control4

Control4, a leading provider of the operating system for the smart home, delivers intelligent control of consumer electronics products, appliances and networking systems through an easy-to-use and intuitive software interface. Founded in 2003, the company delivers affordable automation and control of lighting, music, video, HVAC, security, and energy management systems to the broad market through more than 1,600 custom integrators, retail outlets, and distributors in over 65 countries. Control4 is the platform of choice for major consumer electronics companies, hotels, businesses and utilities that require an intelligent, open and affordable control solution. For more information, visit [www.control4.com](http://www.control4.com).

## Disclaimer

Control4 makes no representations or warranties with respect to this publication, and specifically disclaims any express or implied warranties of merchantability or fitness for any particular purpose. Control4 reserves the right to make changes to any and all parts of this publication at any time, without any obligation to notify any person or entity of such changes.

## Licenses

### GNU

GNU GENERAL PUBLIC LICENSE TERMS AND CONDITIONS FOR COPYING, DISTRIBUTION AND MODIFICATION (Section 3.b.)

You may copy and distribute the Program (or a work based on it, under Section 2) in object code or executable form under the terms of Sections 1 and 2 above provided that you also do one of the following: Accompany it with a written offer, valid for at least three years, to give any third party, for a charge no more than your cost of physically performing source distribution, a complete machine-readable copy of the corresponding source code, to be distributed under the terms of Sections 1 and 2 above on a medium customarily used for software interchange.

The complete text for this license is available on the Control4 website.

### Gracenote

Gracenote®, Gracenote logo and logotype, and the "Powered by Gracenote" logo are either a registered trademark or a trademark of Gracenote, Inc. in the United States and/or other countries. Music and DVD recognition technology and related data are provided by Gracenote—Gracenote is the industry standard in Music and DVD recognition technology and related content delivery. For more information visit [www.gracenote.com](http://www.gracenote.com).

### Spread

This product uses software developed by Spread Concepts LLC for use in the Spread toolkit. For more information about Spread see <http://www.spread.org>.

### Libertas

Libertas Firmware copyright statement for Touch Screens 6/26/09

Copyright (c) 2006, One Laptop per Child and Marvell Corporation. All rights reserved.

Redistribution—Redistribution and use in binary form, without modification, are permitted provided that the following conditions are met:

- \* Redistributions must reproduce the above copyright notice and the following disclaimer in the documentation and/or other materials provided with the distribution.
- \* Neither the name of Marvell Corporation nor the names of its suppliers may be used to endorse or promote products derived from this software without specific prior written permission.
- \* No reverse engineering, decompilation, or disassembly of this software is permitted.
- \* You may not use or attempt to use this software in conjunction with any product that is offered by a third party as a replacement, substitute or alternative to a Marvell Product where a Marvell Product is defined as a proprietary wireless LAN embedded client solution of Marvell or a Marvell Affiliate.

DISCLAIMER—THIS SOFTWARE IS PROVIDED BY THE COPYRIGHT HOLDERS AND CONTRIBUTORS "AS IS" AND ANY EXPRESS OR IMPLIED WARRANTIES, INCLUDING, BUT NOT LIMITED TO, THE IMPLIED WARRANTIES OF MERCHANTABILITY AND FITNESS FOR A PARTICULAR PURPOSE ARE DISCLAIMED. IN NO EVENT SHALL THE COPYRIGHT OWNER OR CONTRIBUTORS BE LIABLE FOR ANY DIRECT, INDIRECT, INCIDENTAL, SPECIAL, EXEMPLARY, OR CONSEQUENTIAL DAMAGES (INCLUDING, BUT NOT LIMITED TO, PROCUREMENT OF SUBSTITUTE GOODS OR SERVICES; LOSS OF USE, DATA, OR PROFITS; OR BUSINESS



INTERRUPTION) HOWEVER CAUSED AND ON ANY THEORY OF LIABILITY, WHETHER IN CONTRACT, STRICT LIABILITY, OR TORT (INCLUDING NEGLIGENCE OR OTHERWISE) ARISING IN ANY WAY OUT OF THE USE OF THIS SOFTWARE, EVEN IF ADVISED OF THE POSSIBILITY OF SUCH DAMAGE.

## Copyright

Copyright ©2019 Wirepath Home Systems, LLC. All rights reserved. Control4 and Snap AV and their respective logos are registered trademarks or trademarks of Wirepath Home Systems, LLC, dba "Control4" and/or dba "SnapAV" in the United States and/or other countries. 4Store, 4Sight, Control4 My Home, Snap AV, Araknis, Autonomic, BakPak, Binary, Dragonfly, Episode, Luma, Mockupancy, Nearus, NEEO, OvrC, Pakedge, Sense, Strong, SunbriteTV, Triad, Visualant, WattBox, and Wirepath are also registered trademarks or trademarks of Wirepath Home Systems, LLC. Other names and brands may be claimed as the property of their respective owners. All specifications subject to change without notice.

## Z-Wave

The Z-Wave trademark and logo are owned by Sigma Designs, Inc.

## Contact Information

Control4 Corporation  
11734 S. Election Road  
Salt Lake City, UT 84020 USA  
<http://www.control4.com>

Part Number: DOC-00497, Rev. A (OS 3.1.1) DH  
Control4 Smart Home OS 3.1.1 Release Notes