

## 7" In-Wall Touch Screen-Adapter Kit for 7" Wall-Mount Touch Screen Installation Guide

### Supported Touch Screen Models

- C4-TSWMC7 - 7" In-Wall Touch Screen, Black or White

### Supported Adapter Kit Models

- C4-7IETO7AK, Black or White

### General Description

This Control4® adapter kit provides an adapter plate and cover to accommodate the installation of a 7" In-Wall Touch Screen. The kit is intended for an existing 7" Wall-Mount Touch Screen to be replaced by a 7" In-Wall Touch Screen.

### Requirements

- Tools to modify the back box, such as a tape measure, a pencil, a screwdriver, a small saw to cut heavy plastic, a utility knife, or a handheld rotary cutting tool.
- A 5/16" nut driver or socket wrench, if using the metal wall box.

### What's in the Kit

- Adapter plate
- Adapter cover
- Two (2) screws for power box installation
- 7" In-Wall Touch Screen Adapter Kit for 7" Wall-Mount Touch Screen Installation Guide (this document)

### Specifications

#### Adapter Kit for a Plastic Back Box Model:

- Plastic back box (installed previously)
- Adapter plate
- Adapter cover

#### Adapter Kit for a Metal Back Box Model:

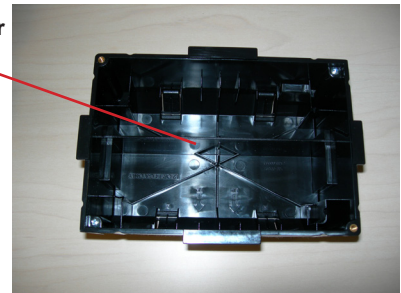
- Metal back box (installed previously)
- Adapter plate
- Adapter cover

### Prepare for Installation

#### Plastic Back Box Model

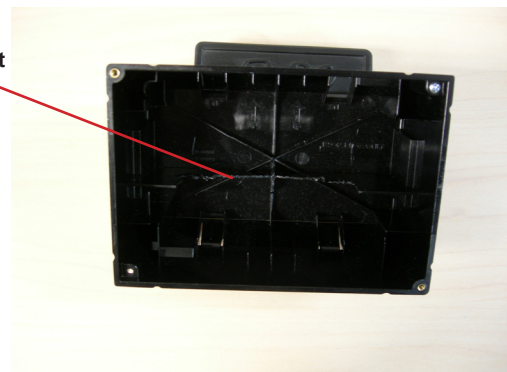
- 1 Remove the old 7" Wall-Mount Touch Screen and leave the back box in place in the wall (see example below).

Back Box Divider



- 2 Note the horizontal back box divider inside the box (see above). You'll need to cut a section out of this back box divider. Measure toward the middle of the divider and mark 1 1/4" from both the left and right edges of the box.
- 3 At the mark you made on both sides of the divider, cut vertically down 1" and then cut toward the middle so there's a cutout in the back box divider using a heavy knife or handheld rotary cutting tool. You'll need the cut out space for the 7" In-Wall Touch Screen's power box.
- 4 Remove the plastic piece you just cut out (see photo next).

Cutout

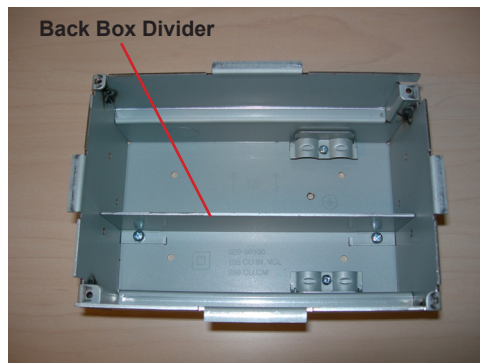


## 7" In-Wall Touch Screen-Adapter Kit for 7" Wall-Mount Touch Screen Installation Guide

- 5 Go to the 'Installation' section for further instructions.

### Metal Back Box Model:

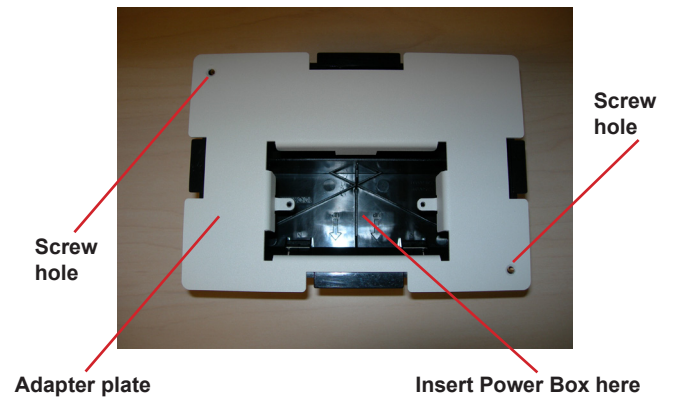
- 1 Remove the old 7" Wall-Mount Touch Screen and leave the back box in place in the wall (see example below).



- 2 Using a screwdriver, remove the screws that hold the back box divider in place.
- 3 Remove the back box divider. You'll need this space to install the 7" In-Wall Touch Screen's power box. While you're at it, also remove the grounding screw from the back box. You'll need this screw to move the grounding wire to your new adapter plate.
- 4 Go to the 'Installation' section next for more instructions.

### Installation

- 1 Insert the grounding screw into the back of the adapter plate. Secure the grounding wire to the grounding screw.
- 2 Place the metal adapter plate on top of the back box, and screw it onto the back box using the two (2) screws that were used to hold the old Touch Screen in place (see next photo). Insert the screws in the opposite corners.



- 3 Place the adapter cover plate on top of the adapter plate. (Disregard the two (2) small holes on the cover plate.)
- 4 Follow the installation instructions in the *5" and 7" In-Wall Touch Screen Installation Guide* to attach the high or low-voltage connections to the power box. The use of high or low voltage will depend on your installation requirements.
- 5 Remove the two (2) sheet metal screws from the power box, and use the two (2) screws included in the kit to attach the power box to the adapter plate.
- 6 Insert the 7" In-Wall Touch Screen's power box into the adapter plate or adapter cover's hole and screw it in place (see the next photo).



- 7 Attach the new 7" In-Wall Touch Screen.



### Warranty

Limited 2-year Warranty. Go to <http://www.control4>.

com/warranty for details.

## About This Document

Part number: 200-00199, Rev. D 7/06/2011