



Control4® 4Sight® Service with Anywhere Access: Web Quick Reference

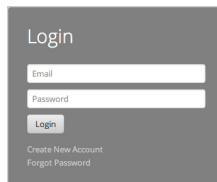
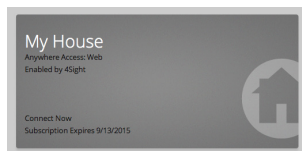
Control your home from the web while you're away

Welcome to the exciting world of home automation. With Control4® 4Sight® Service and Anywhere Access: Web from any computer, you can control everything in your system from the Internet even when you're not at home. Not sure whether you've locked all of the doors when you left home? Simply check your locks from your laptop on the Internet to make sure everything's buttoned up.

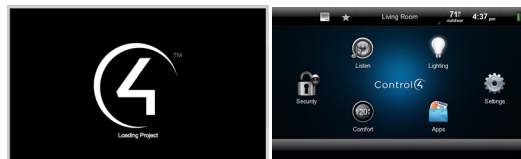
Getting started

- 1 You'll need a subscription to the 4Sight Service (fee required) to use 4Sight with Anywhere Access. Your dealer can help you get a 4Sight subscription.
- 2 Open an Internet browser from the device you are using.
- 3 Go to **customer.control4.com** and log in to your account.

- 4 Click **My House > Connect Now**.



- 5 Wait for the devices to connect and your home system to load (depending on your OS):
 - Pre-OS 2.0: HTML display only.
 - OS 2.0-OS 2.4: HTML or Flash.
 - OS 2.5.0 or later: Flash only.

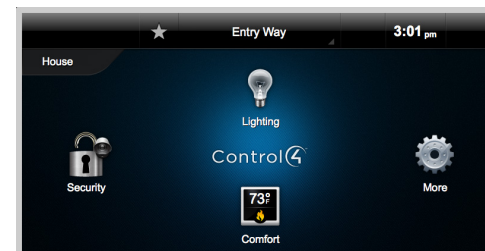


- 6 Start controlling your system.

Select a room to control a device

If the interface shows that it's in a specific room, but you want to control a device in another room, change to the room where the device is. The current room's name appears at the top of your screen. This example shows the 'Family Room.'

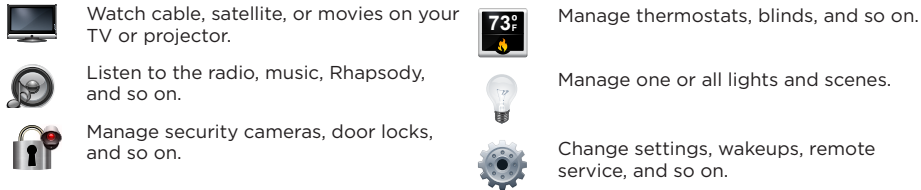
- 1 Click the room's **name** at the top of the screen ('Family Room') to display the Change Rooms screen.
- 2 Click **House**, the **floor**, or the **room**. If a star appears next to the room, this indicates the default room. Let's select the **Entry Way**.
- 3 Notice that the room name changes to 'Entry Way.' Click what you want to control in that room.



Using 4Sight Service with Anywhere Access

Click an icon in the Home menu or room to control your system.

- 1 When you're in the room you want, click the icon you want.
- 2 Click what you want to control:



- 3 When you're finished using the browser, click in the upper-right corner of the account page to log out. Make sure you close the page.

Helpful tips

- **Room off.** Click the power button (see below) to turn off what is currently playing.
- **Listen**
 - Select **Listen** to play music in your room or home.
 - Select **My Music** to access your personal music collection.
 - Select the icons for the popular **Rhapsody** and **TuneIn** music services.
 - Select your favorite radio stations from the **Stations** icon.

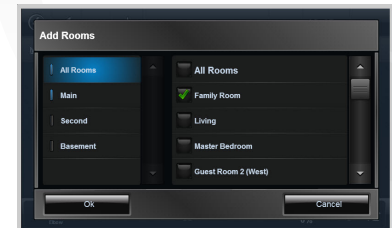
Volume. To control audio, use the media bar (see below). Change the current room's volume, mute the music, power off, and more.



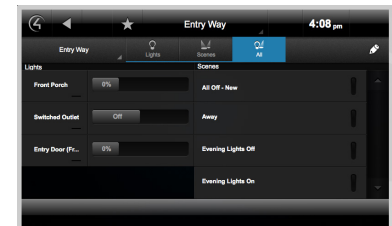
- A** **Currently Playing**—Lists the song currently playing.
- B** **Back**—Skips the song back.
- C** **Pause/Play**—Pauses or plays the song.
- D** **Forward**—Advances the song.
- E** **Mute**—Mutes the song.
- F** **Volume Controls**—Increases or decreases the volume by percentage.
- G** **Power**—Powers off what is currently playing.
- H** **Zones**—Enable or disable media zones. You can add zones from here or in Listen.

Zones. Click to enable or disable audio **zones** by room. For example, you can play music through the speakers in other zones by turning them on here. Accessing zones varies by device.

- Rooms (zones) currently off do not display, since no active devices are playing. To add a zone, start audio from any zone, and click or tap **Zones**. Click or tap **Add Rooms** (see below).
- Rooms are listed on the left by All Rooms, floor, and room (see below). Select the room to enable audio. Stop the audio by unchecking the room.



- **Watch**
 - Select **Watch** to view your favorite channels if your dealer sets up **Channel** icons.
 - Select **Movies** if your dealer sets up your favorite movies.
 - **Comfort.** Thermostats appear in all rooms. Control your thermostats no matter which room you're accessing.
 - **Lighting.** This lists all of the installed Control4 lighting devices in your home, such as keypads, dimmers, switches, or lighting scenes (preprogrammed sets of lights you can control by room or activity).
 - **Dimmers.** Shows as slider bars where you can set light levels and intensity. Just click, hold, and slide the button.
 - **Light Switches.** Shows as on/off toggles with no dimmer control. Just click the button **On** or **Off**.
 - **Lighting Scenes.** Shows as a list of created scenes with specific names. Create, remove, or edit lighting scenes yourself.
- All.** Shows all lights and lighting scenes in the house.
By room. Shows the lights in a specific room.
Scenes. Shows just the lighting scenes.



Recommended Control4 products

- **Control4 App** (OS 2.6 and later). If you'd like to control your home from your iOS or Android smartphones and tablets when you're away, download or install the Control4 App. See the Control4 App documents at www.control4.com under Owners > Resources for details.